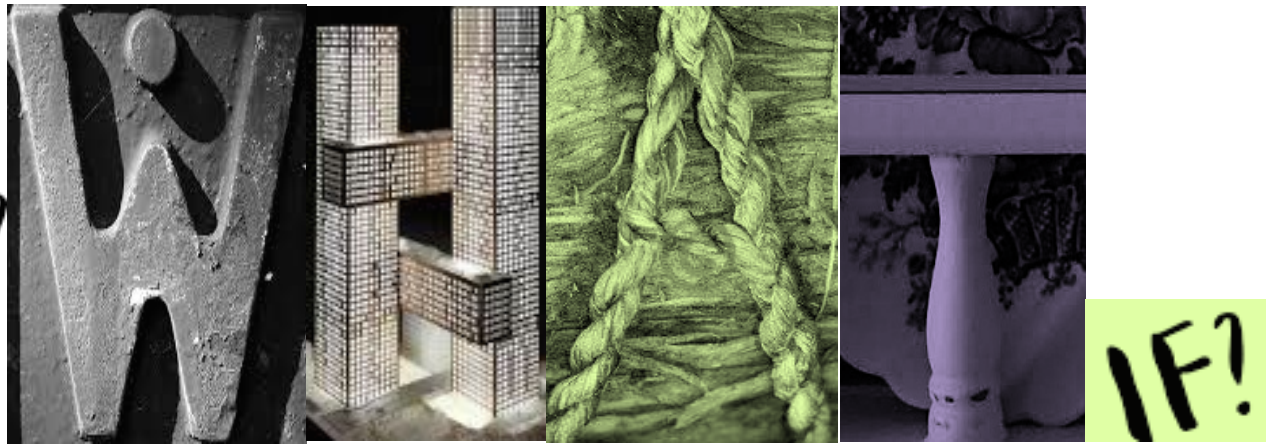
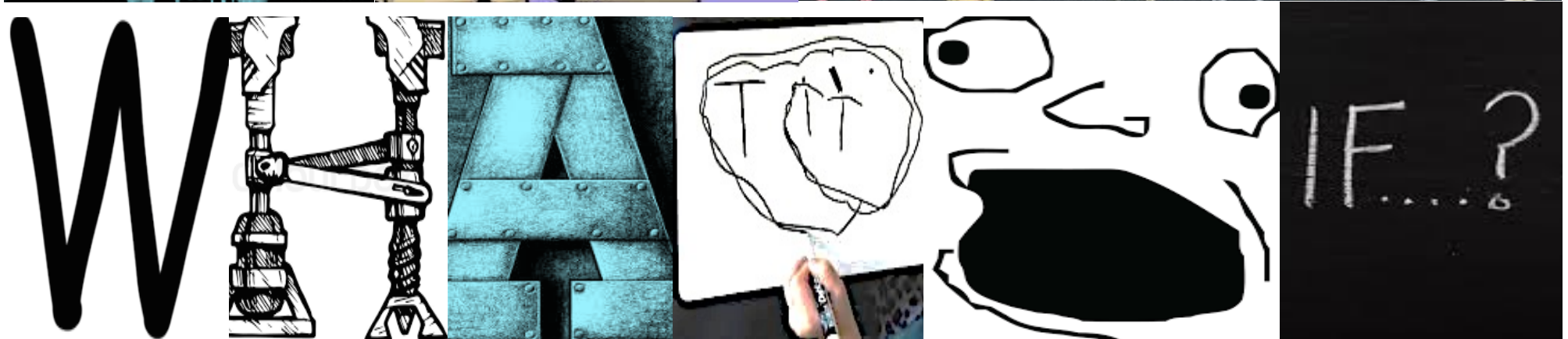


WHAT IF? WHAT  
WHAT WHAT IF? IF?  
IF? WHAT IF?

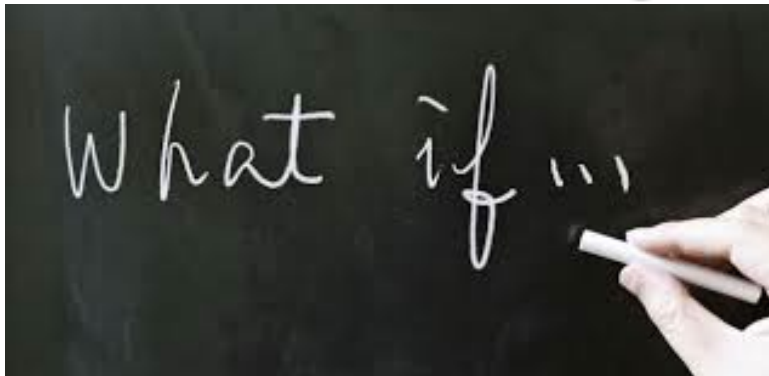
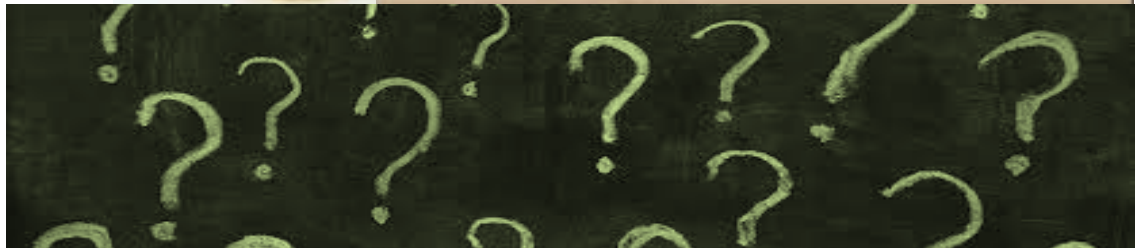








what if?



W



A



Tt



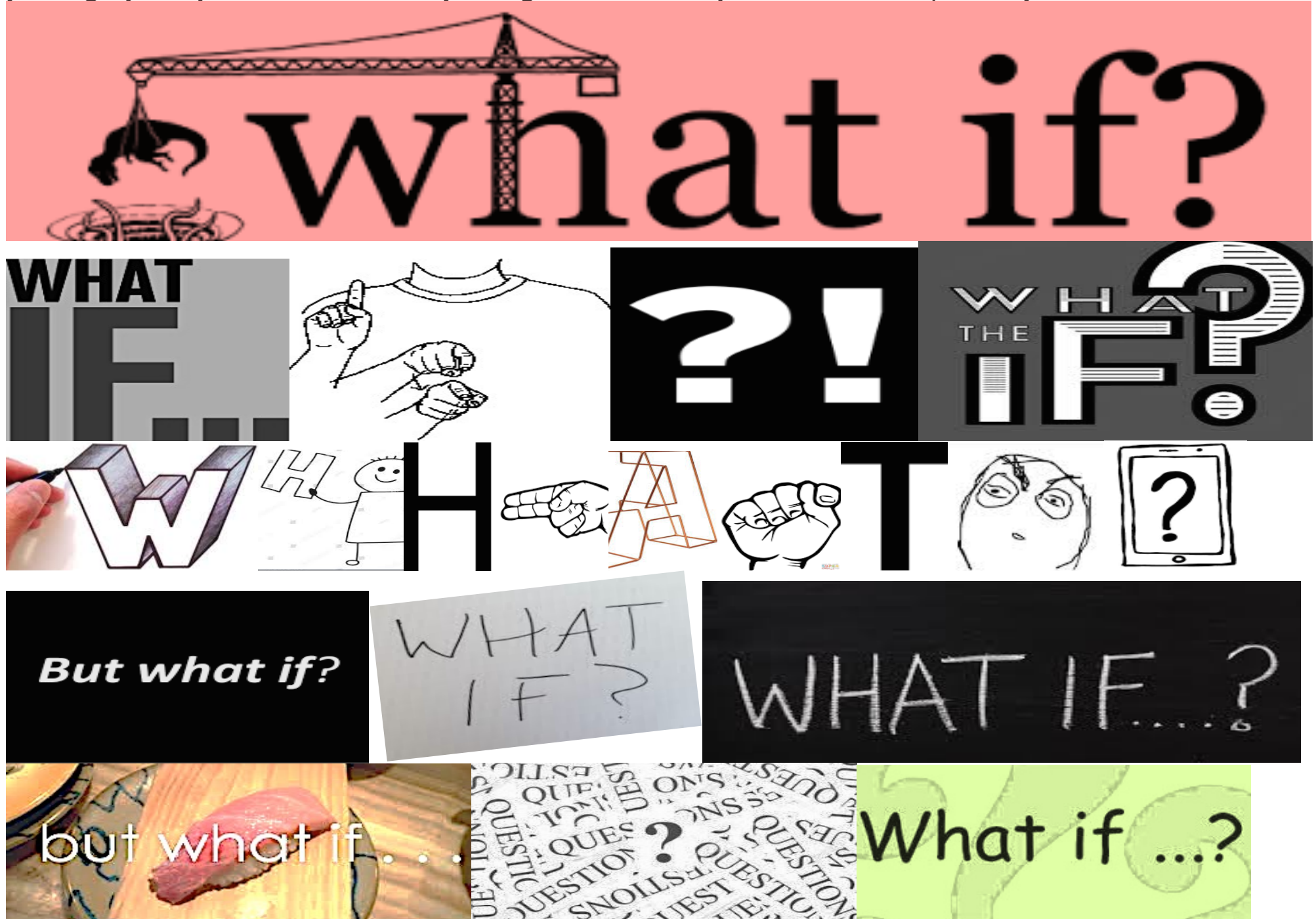
Ff

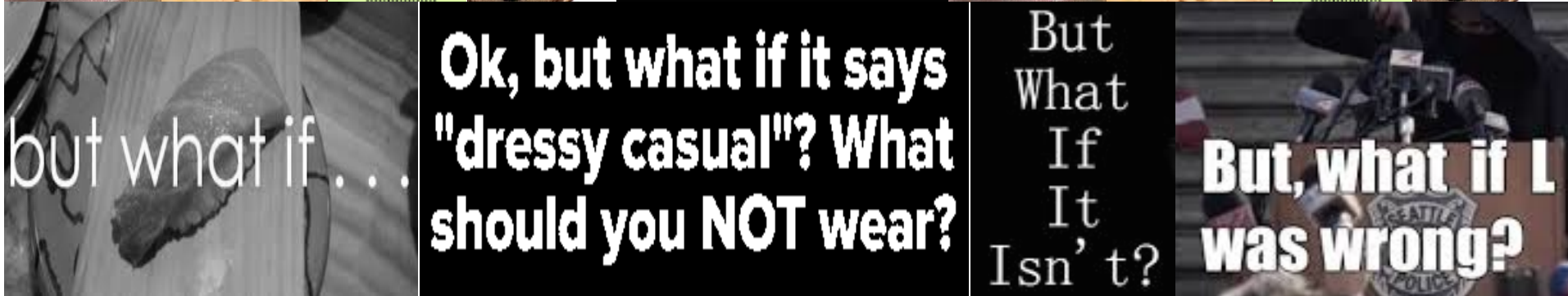


When you want to ask a **question** in American **Sign Language (ASL)**, you simply **sign the question**



word at the end of the sentence — words such as who, what, when, where, which, why, and how. After you **sign** your **question**, as a rule, you **sign** the manual **question mark** repeatedly.









BUT WHAT  
IF I DON'T  
**WANNA**  
PLAY

But what if I fail?

**WHAT  
WHAT  
WHAT  
WHAT**

IF NOT

**!C!C!**

WHAT IF WE DROPPED IT FROM HIGHER UP?

A stick figure wearing a top hat, pointing upwards with its right hand.

## WHAT NEXT?

SO WHAT? | F WHAT? | F WHAT?

What if...

**Now**

IF NOT NOW...

## Now What

**BUT**

*But...*

But

**Yes, BUT...**

# What

# WHAT

# WHAT

What

# What if

